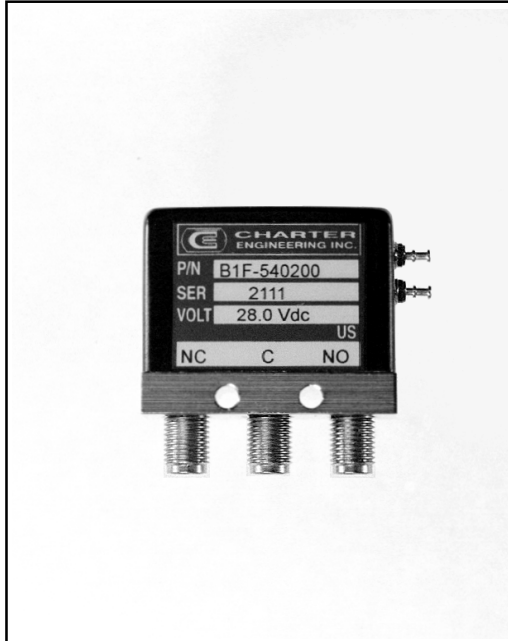
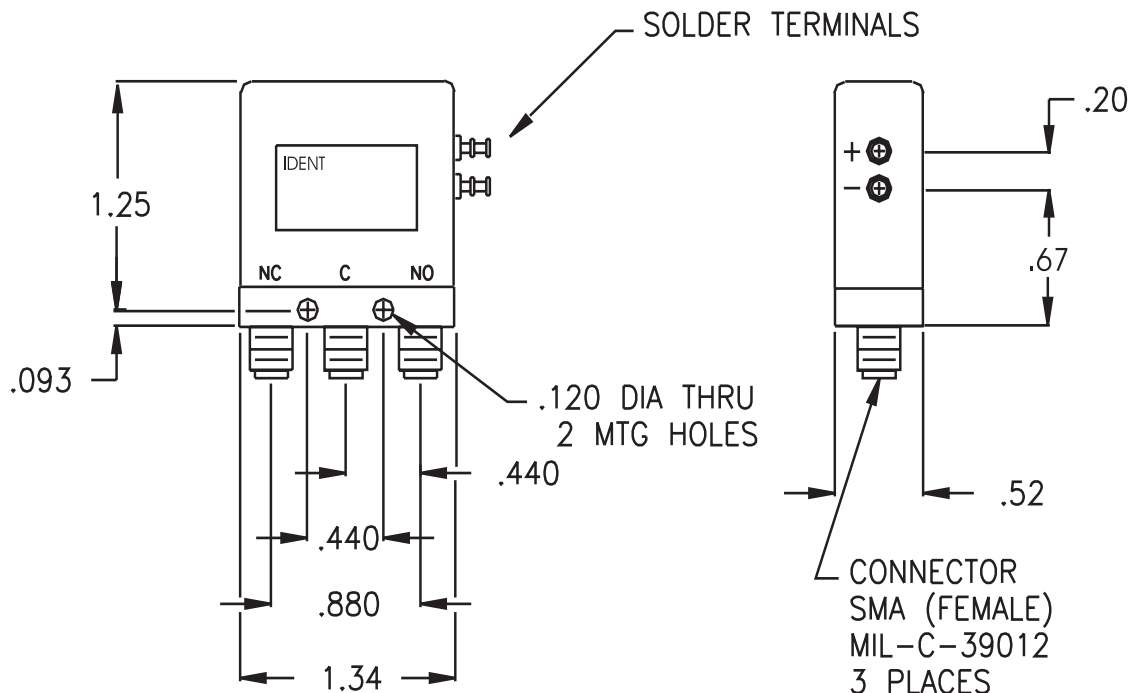


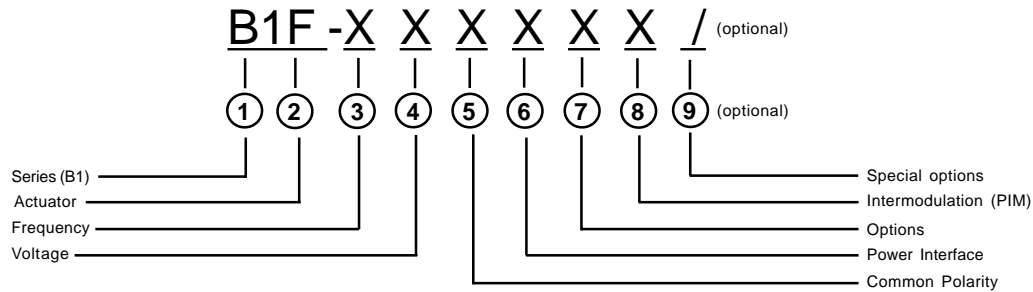
B1 SERIES SP2T FAILSAFE DC - 26.5 GHz



FREQUENCY: GHz	DC - 2.0	2.0 - 4.0	4.0 - 8.0	8.0 - 12.4	12.4 - 18.0	18.0 - 26.5
VSWR (MAX.)	1.20:1	1.25:1	1.30:1	1.40:1	1.50:1	1.65:1
INSERTION LOSS (MAX.)	0.20	0.25	0.30	0.40	0.50	0.70
ISOLATION (MIN.)	90	80	80	70	60	50
IMPEDANCE	50 Ohms					
MECHANICAL						
CONTACT : BREAK BEFORE MAKE						
ACTUATOR : FAILSAFE						
SWITCHING SPEED : 20 mSEC MAX.						
ELECTRICAL						
ACTUATOR VOLTAGE : 28.0, 12.0, 15.0, 24.0 Vdc						
ACTUATOR CURRENT : CONTACT CEI						
POWER HANDLING : 200 WCW @ 1.0 GHz (STANDARD)						
: 300 WCW @ 1.0 GHz (OPT. /P)						
ENVIRONMENTAL						
OPERATING TEMP : -40 DEG. C TO 90 DEG. C (STANDARD)						
: -54 DEG. C TO 90 DEG. C (OPT. /MS)						
SINE VIBRATION : 30 G'S rms						
RANDOM VIBRATION : 20 G'S rms						
LIFE : 1,000,000 CYCLES						
FINISH						
RF CAVITY : ALUMINUM ELECTROLESS NICKEL PLATED PER MIL-C-26074, CLASS 4 (EXCEPT LOW OR ULTRA LOW PIM MODELS)						
ENCLOSURE : ALUMINUM, BLACK						
CONTACT : BERYLLIUM COPPER, GOLD PLATED PER MIL-G-45204						
CONNECTOR SHELL : CRES, PASSIVATED PER QQ-P-35 OR BRASS, ELECTROLESS NICKEL PLATED PER MIL-C-26074						
AVAILABLE OPTIONS						
LOW, ULTRA LOW, AND SUPERIOR INTERMODULATION (PIM)						



B1 SERIES PART NUMBER & ORDERING INFORMATION



1 - Switch Series	
B1	SPDT SMA
2 - Actuator	
F	FAILSAFE
3 - Frequency Bandwidth	
1	DC - 13.0 GHz
2	DC - 2.0 GHz
3	DC - 12.4 GHz
4	DC - 4.0 GHz
5	DC - 18.0 GHz
6	DC - 6.0 GHz
7	DC - 26.5 GHz
8	DC - 20.0 GHz
0	OTHER (SPECIFY)
4 - Voltage	
1	10 - 14 Vdc (12.0 NOMINAL)
2	13 - 18 Vdc (15.0 NOMINAL)
3	20 - 30 Vdc (24.0 NOMINAL)
4	24 - 32 Vdc (28.0 NOMINAL)
5	OTHER
0	NOT REQUIRED
5 - Common Polarity	
0	NOT REQUIRED
6 - Power Interface	
1	SOLDER TERMINAL (SIDE OF SWITCH)
7 - Options	
0	NO OTHER OPTIONS REQUIRED
8 - Intermodulation	
7	LOW PASSIVE INTERMUDULATION
8	SUPERIOR PASSIVE INTERMUDULATION
9	ULTRA LOW PASSIVE INTERMODULATION
0	STANDARD SWITCH
9 - Special Options (optional - leave blank if not required)	
/P	HIGH TEMP, HIGH POWER CONNECTOR
/MS	EXTENDED TEMP RANGE -54 DEG C TO + 90 DEG
/MSP	HIGH TEMP, HIGH POWER CONNECTOR AND EXTENDED TEMP RANGE