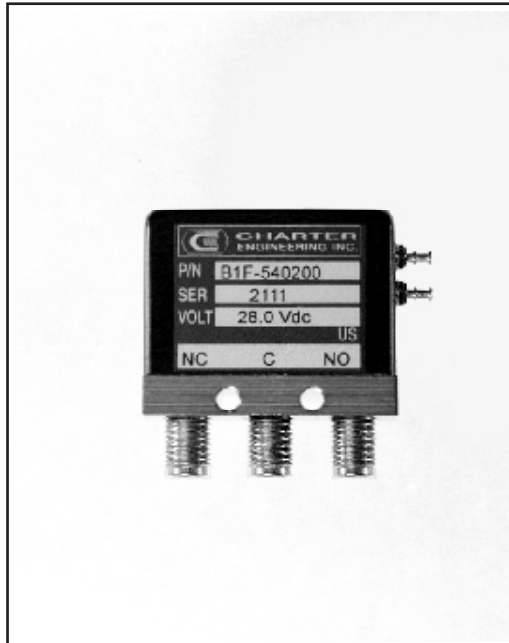
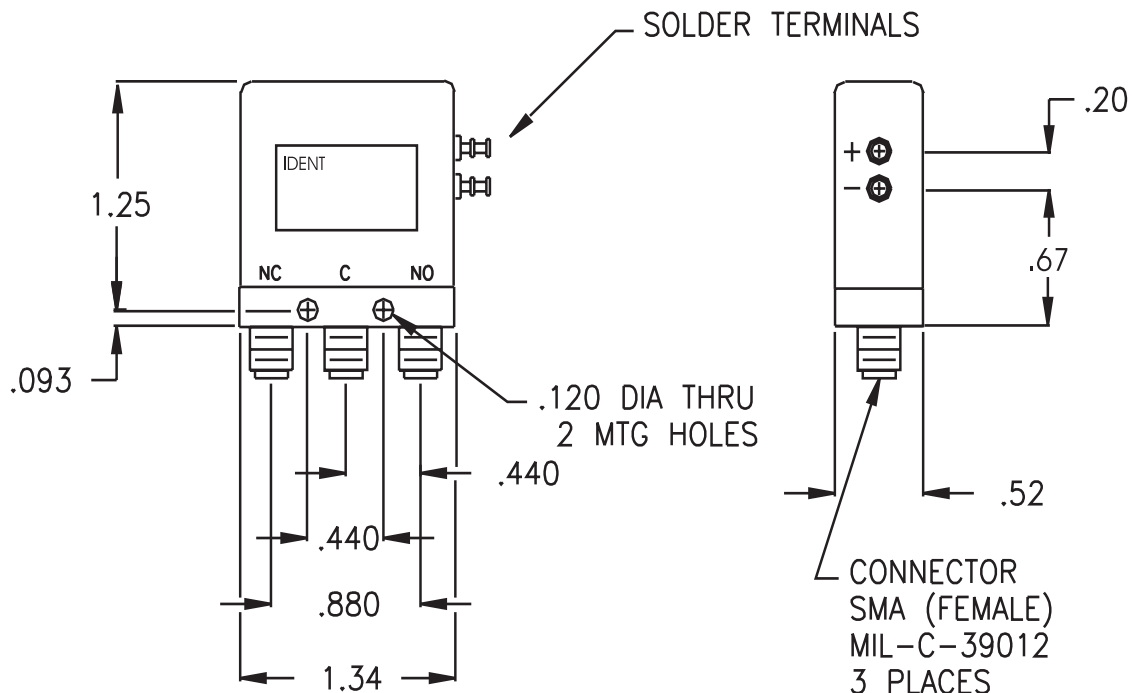


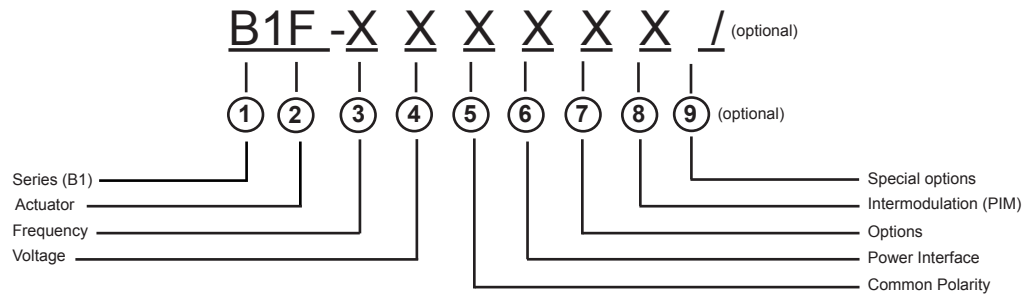
B1 SERIES SP2T FAILSAFE DC - 26.5 GHz



FREQUENCY: GHz	DC - 2.0	2.0 - 4.0	4.0 - 8.0	8.0 - 12.4	12.4 - 18.0	18.0 - 26.5
VSWR (MAX.)	1.20:1	1.25:1	1.30:1	1.40:1	1.50:1	1.65:1
INSERTION LOSS (MAX.)	0.20	0.25	0.30	0.40	0.50	0.70
ISOLATION (MIN.)	90	80	80	70	60	50
IMPEDANCE	50 Ohms					
MECHANICAL						
CONTACT ACTUATOR SWITCHING SPEED	:	BREAK BEFORE MAKE FAILSAFE 20 mSEC MAX.				
ELECTRICAL						
ACTUATOR VOLTAGE ACTUATOR CURRENT POWER HANDLING	:	28.0, 12.0, 15.0, 24.0 Vdc CONTACT CEI 200 WCW @ 1.0 GHz (STANDARD) 300 WCW @ 1.0 GHz (OPT. /P)				
ENVIRONMENTAL						
OPERATING TEMP SHOCK RANDOM VIBRATION LIFE	:	-30 DEG. C TO 80 DEG. C (STANDARD) -54 DEG. C TO 90 DEG. C (OPT. /MS) 50 G'S (SAWTOOTH) 15 G'S rms (NON-OPERATING) 1,000,000 CYCLES				
FINISH						
RF CAVITY ENCLOSURE CONTACT CONNECTOR SHELL NOTE	:	ALUMINUM ELECTROLESS NICKEL PLATED PER MIL-C-26074, CLASS 4 (EXCEPT LOW OR ULTRA LOW PIM MODELS) ALUMINUM, BLACK BERYLLIUM COPPER, GOLD PLATED PER MIL-G-45204 CRES, PASSIVATED PER QQ-P-35 OR BRASS, ELECTROLESS NICKEL PLATED PER MIL-C-26074 FINISH MAY MAY FOR /MS VERSION				
AVAILABLE OPTIONS LOW, ULTRA LOW, AND SUPERIOR INTERMODULATION (PIM)						



B1 SERIES PART NUMBER & ORDERING INFORMATION

**1 - Switch Series**

B1 SPDT SMA

2 - Actuator

F FAILSAFE

3 - Frequency Bandwidth

1	DC - 13.0 GHz	6	DC - 6.0 GHz
2	DC - 2.0 GHz	7	DC - 26.5 GHz
3	DC - 12.4 GHz	8	DC - 20.0 GHz
4	DC - 4.0 GHz	0	OTHER (SPECIFY)
5	DC - 18.0 GHz		

4 - Voltage

1	10 - 14 Vdc (12.0 NOMINAL)	4	24 - 32 Vdc (28.0 NOMINAL)
2	13 - 18 Vdc (15.0 NOMINAL)	5	OTHER
3	20 - 30 Vdc (24.0 NOMINAL)	0	NOT REQUIRED

5 - Common Polarity

0 NOT REQUIRED

6 - Power Interface

1 SOLDER TERMINAL (SIDE OF SWITCH)

7 - Options

0 NO OTHER OPTIONS REQUIRED

8 - Intermodulation

7	LOW PASSIVE INTERMODULATION	9	ULTRA LOW PASSIVE INTERMODULATION
8	SUPERIOR PASSIVE INTERMODULATION	0	STANDARD SWITCH

9 - Special Options (optional - leave blank if not required)

/P HIGH TEMP, HIGH POWER CONNECTOR
 /MS EXTENDED TEMP RANGE -54 DEG C TO + 90 DEG
 /MSP HIGH TEMP, HIGH POWER CONNECTOR AND EXTENDED TEMP RANGE