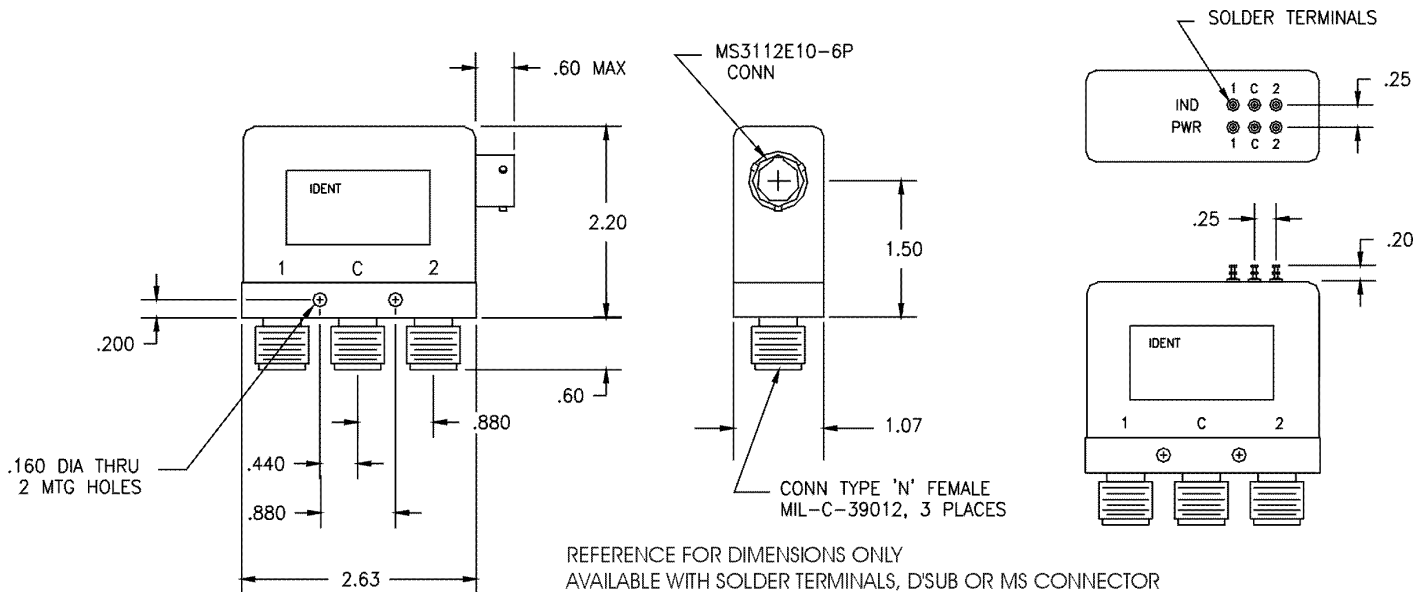


B6 SERIES SPDT DC - 12.4 GHz

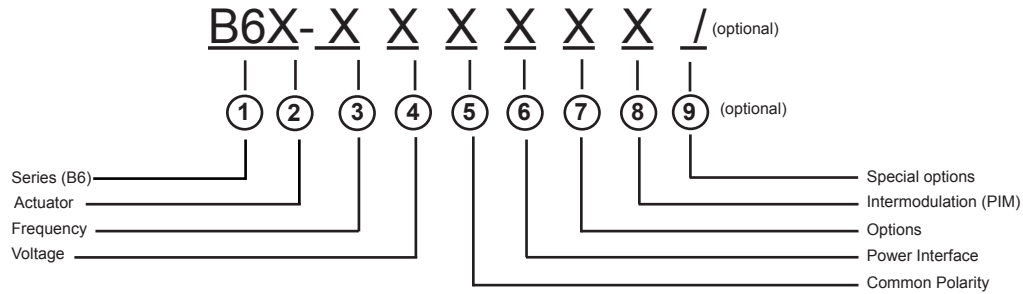
OPEN PORTS TERMINATED



FREQUENCY: GHz	DC - 2.0	2.0 - 4.0	4.0 - 8.0	8.0 - 12.4
VSWR (MAX.)	1.20:1	1.30:1	1.40:1	1.50:1
INSERTION LOSS (MAX.)	0.20	0.30	0.40	0.50
ISOLATION (MIN.)	80	70	70	60
IMPEDANCE	50 Ohms			
MECHANICAL				
CONTACT :	BREAK BEFORE MAKE			
ACTUATOR :	FAILSAFE, LATCHING, MOMENTARY			
SWITCHING SPEED :	20 mSEC MAX.			
ELECTRICAL				
ACTUATOR VOLTAGE :	28.0, 12.0, 15.0, 24.0 Vdc			
ACTUATOR CURRENT :	CONTACT CEI			
POWER HANDLING :	350 WCW @ 1.0 GHz (STANDARD)			
TERMINATION :	950 WCW @ 1.0 GHz (OPT. /P)			
	8 WATTS MAX.			
ENVIRONMENTAL				
OPERATING TEMP :	-40 DEG. C TO 85 DEG. C (STANDARD)			
	-54 DEG. C TO 90 DEG. C (OPT. /MS)			
SHOCK :	50 G's (SAWTOOTH)			
RANDOM VIBRATION :	15 G's rms (NON-OPERATING)			
LIFE :	1,000,000 CYCLES			
FINISH				
RF CAVITY :	ALUMINUM ELECTROLESS NICKEL PLATED PER MIL-C-26074, CLASS 4 (EXCEPT LOW OR ULTRA LOW IM MODELS)			
ENCLOSURE :	ALUMINUM, BLACK OR BLUE			
CONTACT :	BERYLLIUM COPPER, GOLD PLATED PER MIL-G-45204			
CONNECTOR SHELL :	CRES, PASSIVATED PER QQ-P-35 OR BRASS, ELECTROLESS NICKEL PLATED PER MIL-C-26074			
NOTE :	FINISH MAY VARY FOR /MS VERSION			
AVAILABLE OPTIONS				
INDICATOR CIRCUITRY :	CUT OFF POWER CIRCUIT			
SUPPRESSION DIODE :	MS CONNECTOR OR EQUIV. (MIL-SPEC)			
TTL LOGIC :	D'SUB MINIATURE SERIES			
	LOW, ULTRA LOW, AND SUPERIOR INTERMODULATION (IM)			



B6 SERIES PART NUMBER & ORDERING INFORMATION

**1 - Switch Series**

B6 SPDT TERMINATED TYPE N

2 - Actuator

F	FAILSAFE	R	MOMENTARY
G	FAILSAFE WITH SUPPRESSION DIODE	S	MOMENTARY WITH SUPPRESSION DIODE
H	FAILSAFE WITH INDICATOR	T	MOMENTARY WITH INDICATOR
J	FAILSAFE WITH SUPPRESSION DIODE AND INDICATOR	U	MOMENTARY WITH SUPPRESSION DIODE AND INDICATOR
L	LATCHING	Y	OTHER (SPECIFY)
M	LATCHING WITH SUPPRESSION DIODE		
N	LATCHING WITH INDICATOR		
P	LATCHING WITH SUPPRESSION DIODE AND INDICATOR		

3 - Frequency Bandwidth

1	DC - 13.0 GHz
2	DC - 2.0 GHz
3	DC - 12.4 GHz
4	DC - 4.0 GHz
6	DC - 6.0 GHz

4 - Voltage

1	10 - 14 Vdc (12.0 NOMINAL)	4	26 - 30 Vdc (28.0 NOMINAL)
2	13 - 17 Vdc (15.0 NOMINAL)	5	OTHER
3	22 - 26 Vdc (24.0 NOMINAL)	0	NOT REQUIRED

5 - Common Polarity

1	POSITIVE (+) COMMON
2	NEGATIVE (-) OR RETURN Vdc COMMON
0	NOT REQUIRED

6 - Power Interface

1	SOLDER TERMINAL (TOP OF SWITCH)	6	D' SUB MINIATURE SERIES (SIDE OF SWITCH)
4	CONN MS3112E-XX-XXP OR EQUIV. (SIDE OF SWITCH)	8	OTHER

7 - Options

1	CUT OFF POWER CIRCUIT (LATCHING ONLY)	8	OTHER (SPECIFY)
2	TTL LOGIC	9	CUSTOM (ORDER)
3	CUT OFF PWR CIRCUIT & TTL LOGIC (LATCHING ONLY)	0	NO OTHER OPTIONS REQUIRED
4	BCD TTL DECODER		

8 - Intermodulation

7	LOW PASSIVE INTERMODULATION	9	ULTRA LOW PASSIVE INTERMODULATION
8	SUPERIOR PASSIVE INTERMODULATION	0	STANDARD SWITCH

9 - Special Options (optional - leave blank if not required)

/P	HIGH TEMP, HIGH POWER CONNECTOR
/MS	EXTENDED TEMP RANGE -54 DEG C TO + 90 DEG
/MSP	HIGH TEMP, HIGH POWER CONNECTOR AND EXTENDED TEMP RANGE