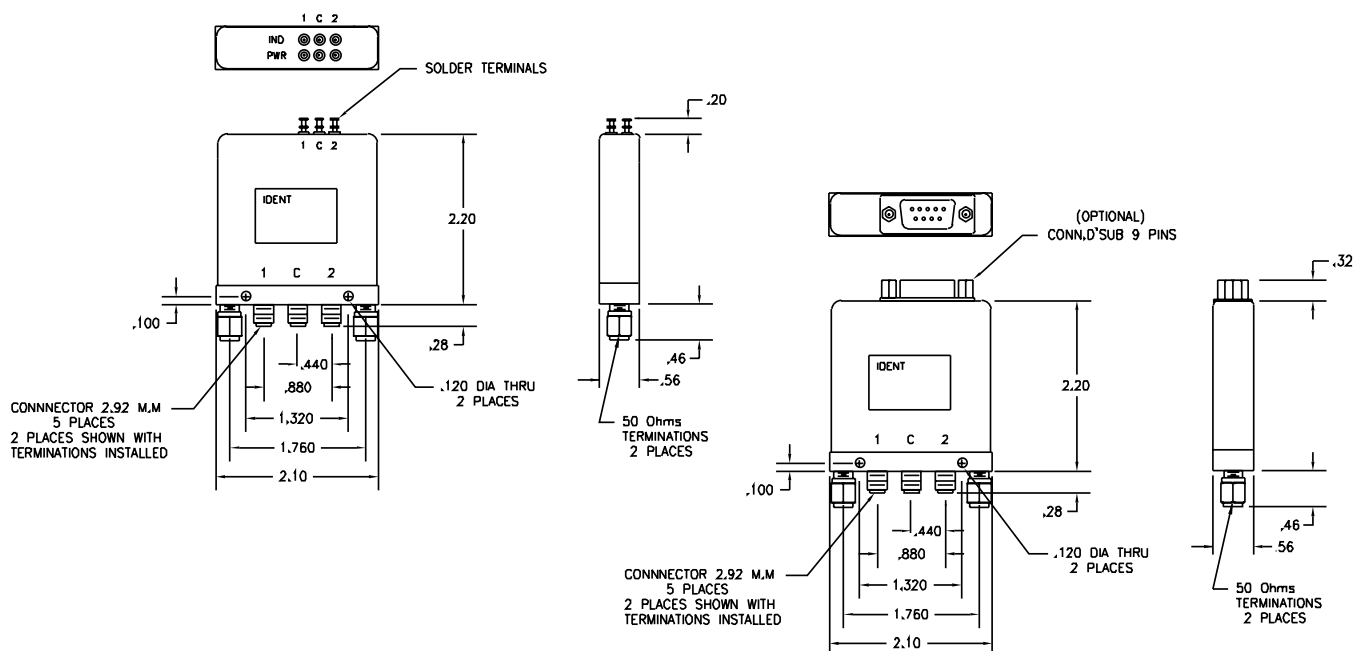


B80 SERIES
SPDT EXT TERMINATED
DC - 40.0 GHz
2.92 mm

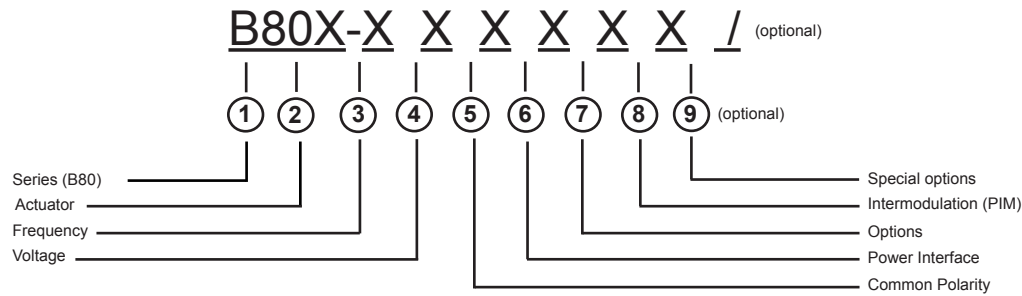


FREQUENCY: GHz	DC - 2.0	2.0 - 6.0	6.0 - 12.4	12.4 - 18.0	18.0 - 26.5	26.5 - 40.0
VSWR (MAX.)	1.20:1	1.30:1	1.40:1	1.50:1	1.60:1	1.60:1
INSERTION LOSS (MAX.)	0.20	0.30	0.40	0.50	0.60	0.60
ISOLATION (MIN.)	90	80	70	60	60	60
IMPEDANCE	50 Ohms					
MECHANICAL						
	CONTACT	:	BREAK BEFORE MAKE			
	ACTUATOR	:	FAILSAFE, LATCHING, MOMENTARY			
	SWITCHING SPEED	:	20 mSEC MAX.			
ELECTRICAL						
	ACTUATOR VOLTAGE	:	28.0, 12.0, 15.0, 24.0 Vdc			
	ACTUATOR CURRENT	:	CONTACT CEI			
	POWER HANDLING	:	200 WCW @ 1.0 GHz (STANDARD)			
ENVIRONMENTAL						
	OPERATING TEMP	:	-40 DEG. C TO 85 DEG. C (STANDARD)			
	SHOCK	:	50 G's (SAWTOOTH)			
	RANDOM VIBRATION	:	15 G's rms (NON-OPERATING)			
	LIFE	:	1,000,000 CYCLES			
FINISH						
	RF CAVITY	:	ALUMINUM ELECTROLESS NICKEL PLATED PER MIL-C-26074, CLASS 4 (EXCEPT LOW OR ULTRA LOW IM MODELS)			
	ENCLOSURE	:	ALUMINUM, BLUE OR BLACK			
	CONTACT	:	BERYLLIUM COPPER, GOLD PLATED PER MIL-G-45204			
	CONNECTOR SHELL	:	CRES, PASSIVATED PER QQ-P-35 OR BRASS			
	NOTE	:	FINISH MAY VARY			
AVAILABLE OPTIONS						
	INDICATOR CIRCUITRY	:	CUT OFF POWER CIRCUIT			
	SUPPRESSION DIODE	:	D'SUB MINIATURE SERIES			
	TTL LOGIC	:	BCD DECODER			
	LOW, ULTRA LOW, AND SUPERIOR INTERMODULATION (PIM)	:				

NOTE: REFERENCE FOR DIMENSIONS ONLY.
EACH MODEL NUMBER WILL HAVE A UNIQUE SCHEMATIC.



B80 SERIES PART NUMBER & ORDERING INFORMATION



1 - Switch Series

B80 SPDT EXT TERMINATED 2.92 mm (DC - 40.0 GHz)

2 - Actuator

F	FAILSAFE	R	MOMENTARY
G	FAILSAFE WITH SUPPRESSION DIODE	S	MOMENTARY WITH SUPPRESSION DIODE
H	FAILSAFE WITH INDICATOR	T	MOMENTARY WITH INDICATOR
J	FAILSAFE WITH SUPPRESSION DIODE AND INDICATOR	U	MOMENTARY WITH SUPPRESSION DIODE AND INDICATOR
L	LATCHING	Y	OTHER (SPECIFY)
M	LATCHING WITH SUPPRESSION DIODE		
N	LATCHING WITH INDICATOR		
P	LATCHING WITH SUPPRESSION DIODE AND INDICATOR		

3 - Frequency Bandwidth

A	DC - 40.0 GHz
0	OTHER (SPECIFY)

4 - Voltage

1	10 - 14 Vdc (12.0 NOMINAL)	4	26 - 30 Vdc (28.0 NOMINAL)
2	13 - 17 Vdc (15.0 NOMINAL)	5	OTHER
3	22 - 26 Vdc (24.0 NOMINAL)	0	NOT REQUIRED

5 - Common Polarity

1	POSITIVE (+) COMMON
2	NEGATIVE (-) OR RETURN Vdc COMMON
0	NOT REQUIRED

6 - Power Interface

1	SOLDER TERMINAL (TOP OF SWITCH)	5	D' SUB MINIATURE SERIES (TOP OF SWITCH)
		8	OTHER

7 - Options

1	CUT OFF POWER CIRCUIT (LATCHING ONLY)	8	OTHER (SPECIFY)
2	TTL LOGIC	9	CUSTOM (ORDER)
3	CUT OFF PWR CIRCUIT & TTL LOGIC (LATCHING ONLY)	0	NO OTHER OPTIONS REQUIRED
4	BCD TTL DECODER		

8 - Intermodulation

7	LOW PASSIVE INTERMODULATION	9	ULTRA LOW PASSIVE INTERMODULATION
8	SUPERIOR PASSIVE INTERMODULATION	0	STANDARD SWITCH

9 - Special Options (optional - leave blank if not required)

NOT AVAILABLE