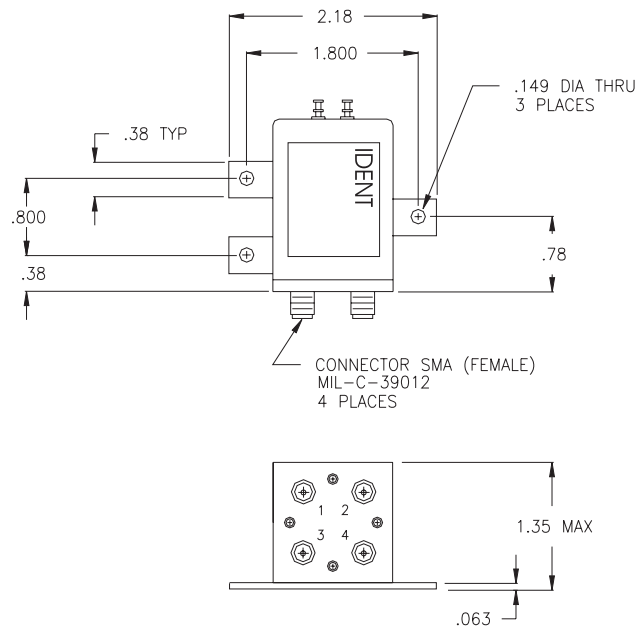
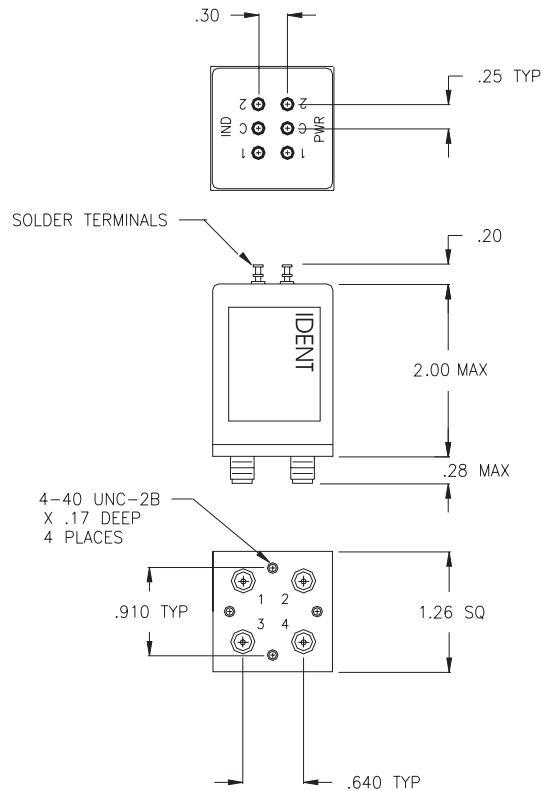


L1 SERIES DPDT (TRANSFER) DC - 26.5 GHz

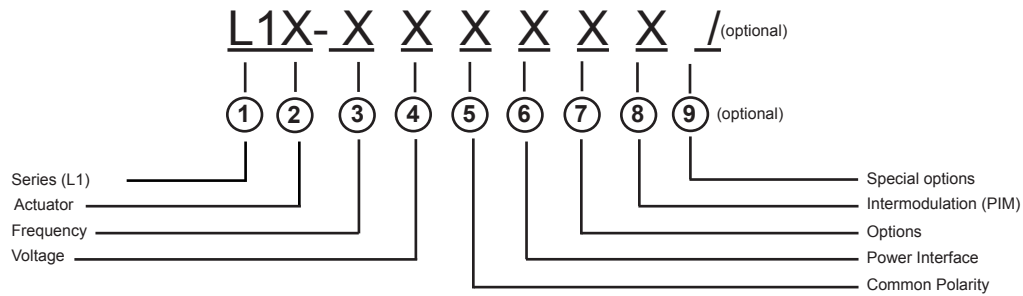


FREQUENCY: GHz	DC - 2.0	2.0 - 4.0	4.0 - 8.0	8.0 - 12.4	12.4 - 18.0	18.0 - 26.5
VSWR (MAX.)	1.20:1	1.25:1	1.30:1	1.40:1	1.50:1	1.65:1
INSERTION LOSS (MAX.)	0.20	0.25	0.30	0.40	0.50	0.70
ISOLATION (MIN.)	90	80	80	70	60	50
IMPEDANCE	50 Ohms					
MECHANICAL						
CONTACT	: BREAK BEFORE MAKE					
ACTUATOR	: FAILSAFE, LATCHING, MOMENTARY					
SWITCHING SPEED	: 20 mSEC MAX.					
ELECTRICAL						
ACTUATOR VOLTAGE	: 28.0, 12.0, 15.0, 24.0 Vdc					
ACTUATOR CURRENT	: CONTACT CEI					
POWER HANDLING	: 200 WCW @ 1.0 GHz (STANDARD)					
	: 300 WCW @ 1.0 GHz (OPT. /P)					
ENVIRONMENTAL						
OPERATING TEMP	: -30 DEG. C TO 80 DEG. C (STANDARD)					
	: -54 DEG. C TO 90 DEG. C (OPT. /MS)					
SHOCK	: 50 G's (SAWTOOTH)					
RANDOM VIBRATION	: 15 G's rms (NON-OPERATING)					
LIFE	: 1,000,000 CYCLES					
FINISH						
RF CAVITY	: ALUMINUM ELECTROLESS NICKEL PLATED PER MIL-C-26074, CLASS 4 (EXCEPT LOW OR ULTRA LOW IM MODELS)					
ENCLOSURE	: ALUMINUM, BLUE OR BLACK					
CONTACT	: BERYLLIUM COPPER, GOLD PLATED PER MIL-G-45204					
CONNECTOR SHELL	: CRES, PASSIVATED PER QQ-P-35 OR BRASS, ELECTROLESS NICKEL PLATED PER MIL-C-26074					
NOTE	: FINISH MAY VARY FOR /MS VERSION					
AVAILABLE OPTIONS						
INDICATOR CIRCUITRY	: CUT OFF POWER CIRCUIT					
SUPPRESSION DIODE	: D'SUB MINIATURE SERIES					
TTL LOGIC	: MS CONNECTOR OR EQUIV. (MIL-SPEC)					
	: LOW, ULTRA LOW, AND SUPERIOR INTERMODULATION (IM)					



ALSO AVAILABLE WITH D'SUB
OR MS3112E SERIES CONNECTOR

L1 SERIES PART NUMBER & ORDERING INFORMATION

**1 - Switch Series**

L1 DPDT TRANSFER SMA

2 - Actuator

F	FAILSAFE	Y	OTHER (SPECIFY)
G	FAILSAFE WITH SUPPRESSION DIODE		
H	FAILSAFE WITH INDICATOR		
J	FAILSAFE WITH SUPPRESSION DIODE AND INDICATOR		
L	LATCHING		
M	LATCHING WITH SUPPRESSION DIODE		
N	LATCHING WITH INDICATOR		
P	LATCHING WITH SUPPRESSION DIODE AND INDICATOR		

3 - Frequency Bandwidth

1	DC - 13.0 GHz	6	DC - 6.0 GHz
2	DC - 2.0 GHz	7	DC - 26.5 GHz
3	DC - 12.4 GHz	8	DC - 20.0 GHz
4	DC - 4.0 GHz	0	OTHER (SPECIFY)
5	DC - 18.0 GHz		

4 - Voltage

1	10 - 14 Vdc (12.0 NOMINAL)	4	24 - 32 Vdc (28.0 NOMINAL)
2	13 - 18 Vdc (15.0 NOMINAL)	5	OTHER
3	20 - 30 Vdc (24.0 NOMINAL)	0	NOT REQUIRED

5 - Common Polarity

1	POSITIVE (+) COMMON
2	NEGATIVE (-) OR RETURN Vdc COMMON
0	NOT REQUIRED

6 - Power Interface

1	SOLDER TERMINAL (TOP OF SWITCH)	5	D' SUB MINIATURE SERIES (TOP OF SWITCH)
3	CONN MS3112E-XX-XXP OR EQUIV. (TOP OF SWITCH)	8	OTHER

7 - Options

1	CUT OFF POWER CIRCUIT (LATCHING ONLY)	8	OTHER (SPECIFY)
2	TTL LOGIC	9	CUSTOM (ORDER)
3	CUT OFF PWR CIRCUIT & TTL LOGIC (LATCHING ONLY)	0	NO OTHER OPTIONS REQUIRED
4	BCD TTL DECODER		

8 - Intermodulation

7	LOW PASSIVE INTERMODULATION	9	ULTRA LOW PASSIVE INTERMODULATION
8	SUPERIOR PASSIVE INTERMODULATION	0	STANDARD SWITCH

9 - Special Options (optional - leave blank if not required)

/P	HIGH TEMP, HIGH POWER CONNECTOR
/MS	EXTENDED TEMP RANGE -54 DEG C TO + 90 DEG
/MSP	HIGH TEMP, HIGH POWER CONNECTOR AND EXTENDED TEMP RANGE